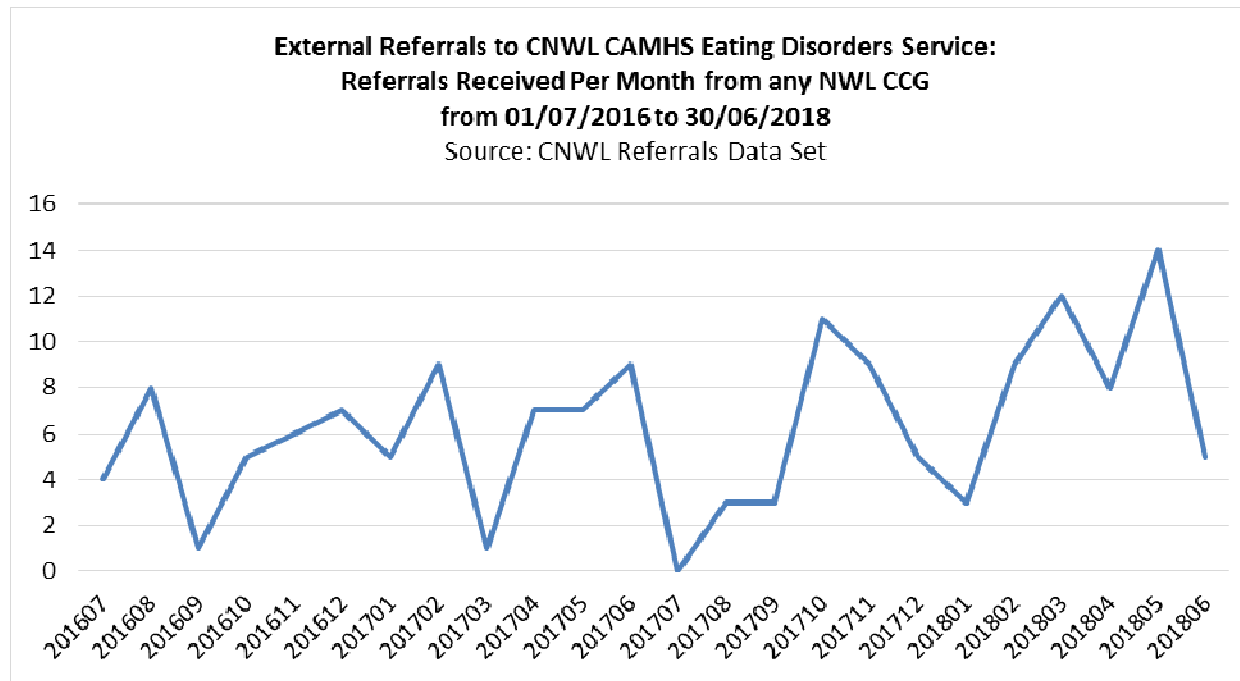
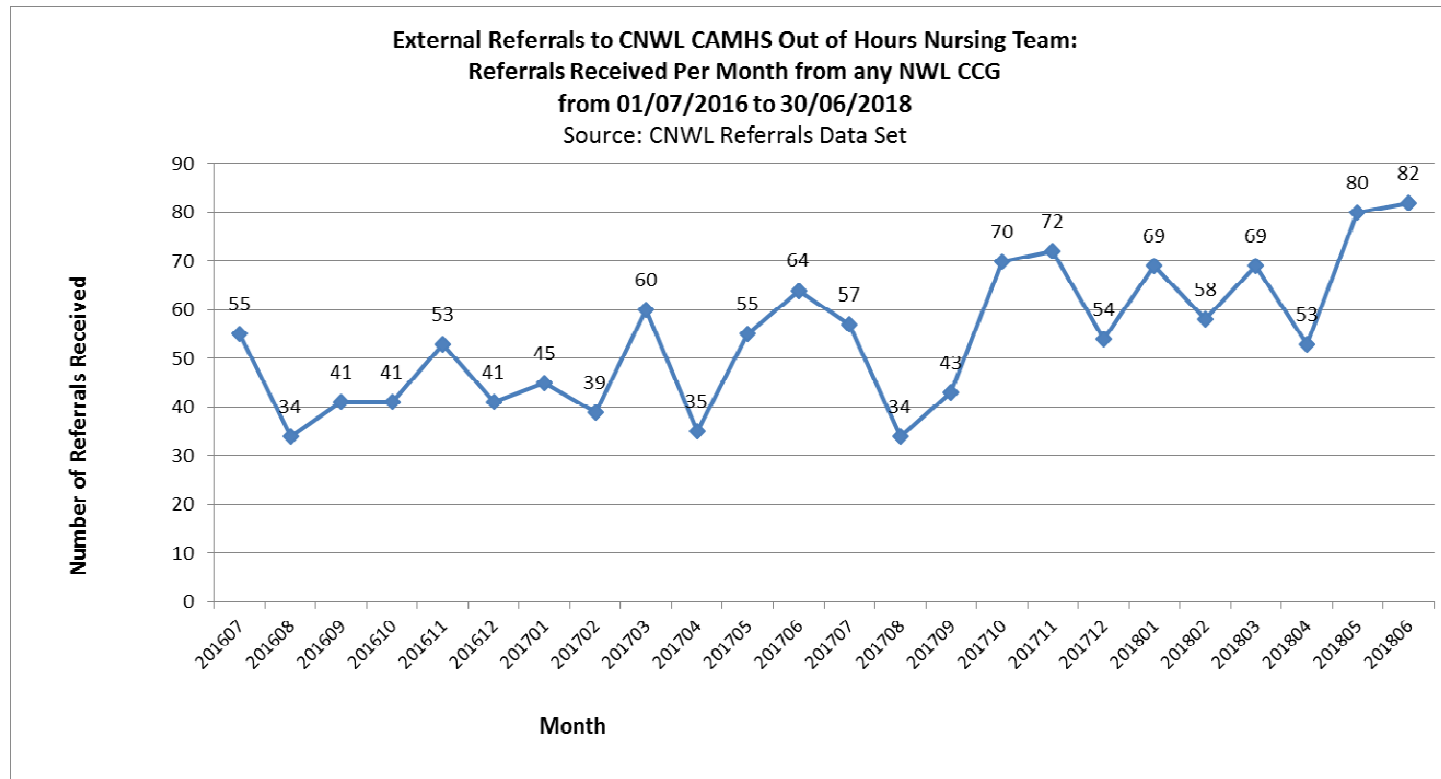


NWL CNWL Eating disorders service – referrals received.



- Total of 153 external referrals between 01/07/2016 and 30/06/2018 of which 40 were for Hillingdon CCG patients
- Interventions offered – family based intervention (Anorexia), Systemic Family Therapy, CBT
- Individual goals set with family
- Outcomes from evaluation include reduction in Tier 4 admissions to ED units.

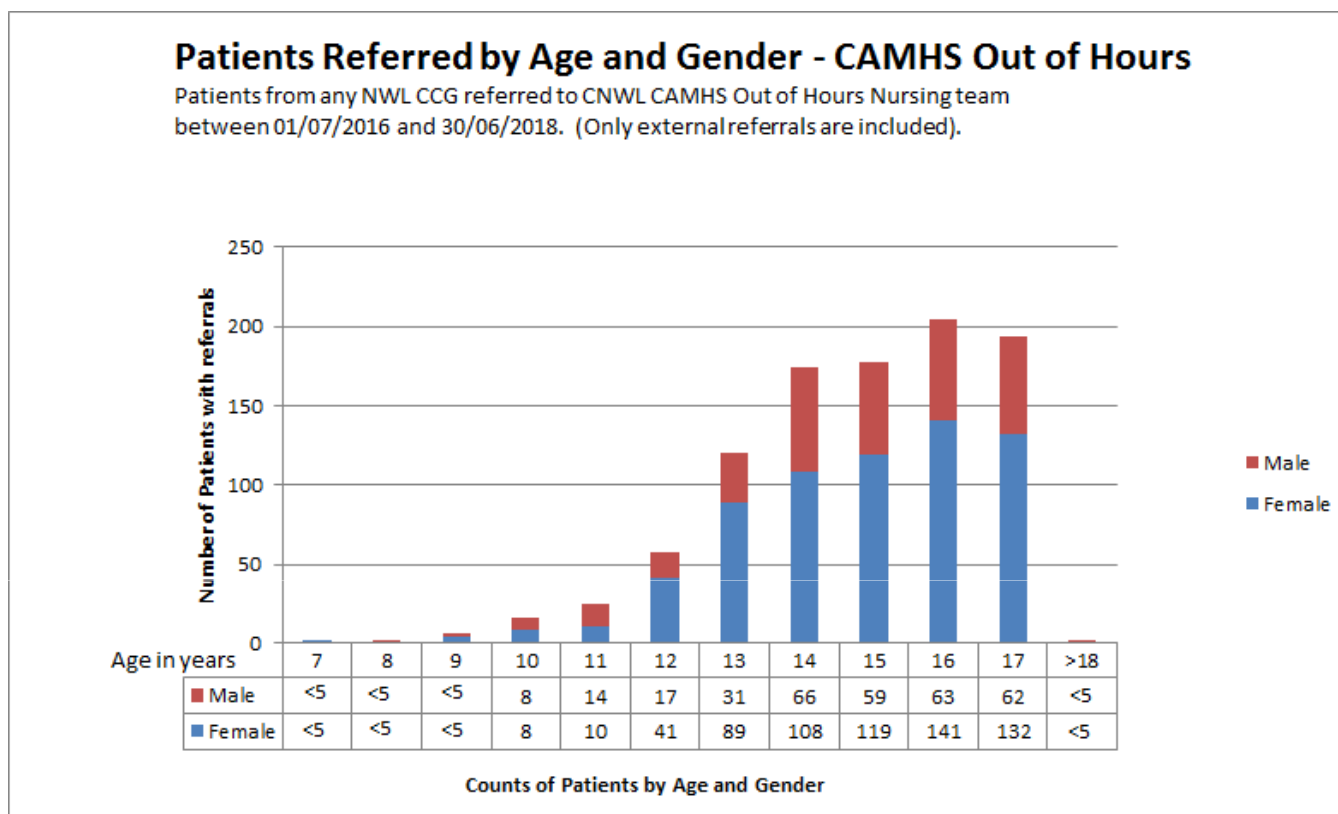
Referrals to CNWL CAMHS Out of Hours Nursing Team



Referrals

- 1,304 external referrals were received by the CNWL CAMHS Out of Hours Nursing Team between 01/07/2016 and 30/06/2018.
- Of these, 266 were referrals for Hillingdon CCG patients.

Demographics of Patients Referred to CNWL CAMHS Out of Hours Nursing Team

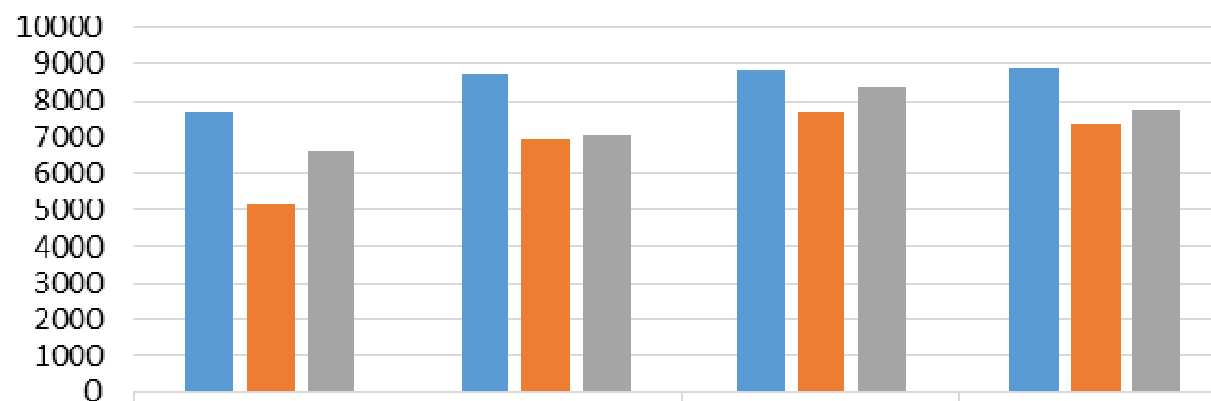


The data above supports targeting online and face to face counselling services for young people over the age of 11 years. Complimenting the existing face to face Hillingdon counselling services currently available. The new service will have a 'Hub' based in Hillingdon.

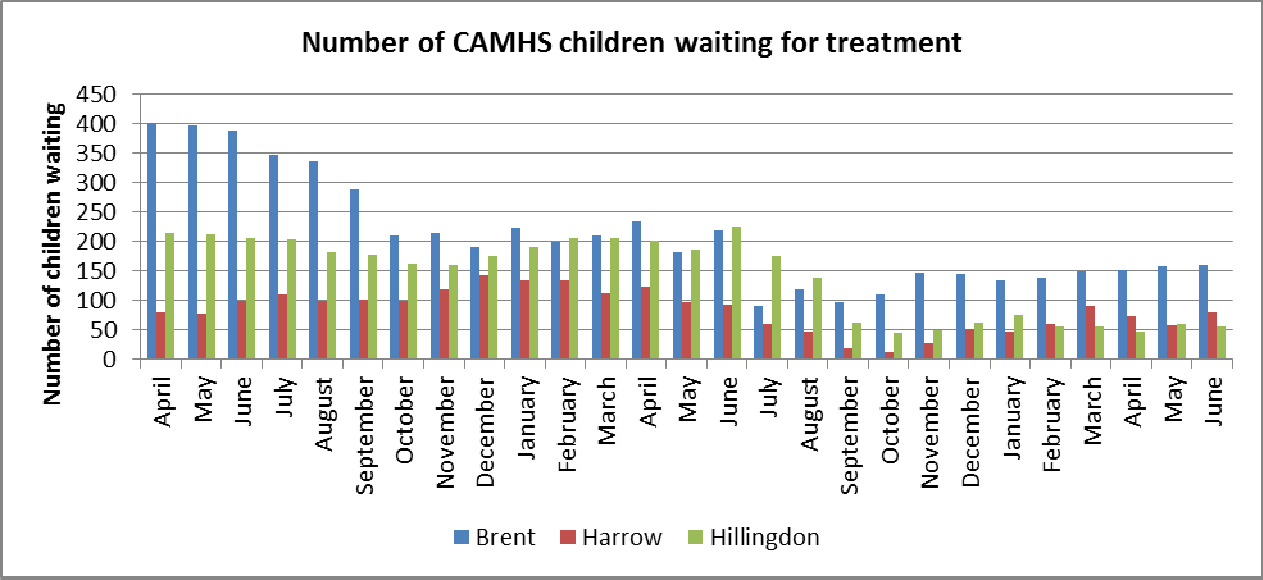
NB This chart and table only counts each patient once, even if they were referred multiple times between 01/07/2016 and 30/06/2018.

CNWL CAMHS Activity (Attended Face-to-Face Contacts) per Financial Year, by CCG

Source: CNWL Patient Level Activity Data



■ Brent CCG	7641	8757	8850	8884
■ Harrow CCG	5158	6935	7655	7356
■ Hillingdon CCG	6627	7063	8362	7692



[illegible][illegible]